

COREtec®

the Original

The **NATURALS** BY COREtec
COLLECTION



INCLUDING
HERRINGBONE PATTERN



From one true original to another, it's a family affair!



The real values in life are those created and found within families; authenticity, trust and the opportunity given to be creative and express yourself.

These same values drive our company and they define our corporate culture. We saw an opportunity to create a better floor. We chased a dream and created a whole new category along the way. As the innovators of COREtec®, the Original, 100% waterproof floor, we did just that. Today, our consumers are enjoying our solutions of stylish, strong floors that sustain real family lives full of entertaining, kids and pets.

"Click, lock, enjoy. It is as simple as that!"

It all began as an entrepreneurial business in 2001, within our founder's heart and spare bedroom as our "headquarters". With the invention of COREtec®, the original, patented, 100% waterproof floor in 2013, we grew rapidly to become the leading brand of these unique and highly innovative products. We launched our European division in 2016 and that same year were acquired and embraced into the family of Shaw Floors, an industry leader and subsidiary of Berkshire Hathaway, led by the world-renowned investor, Warren Buffett.

We've come a long way from where we started to where we are now. But those family values guide us still. Led by management and embraced by every employee, dealer, and partner, we are recognized as the problem-solvers, innovators and design enthusiasts. Today we offer an incredible range of resilient, durable floors that can be purchased, installed and lived upon in one single day.

Click, lock, enjoy. It is as simple as that!

The most difficult task will be choosing from our wide variety of life-like decors.

But don't worry, you are sure to find one to match your style because we have a floor for every personality.

Welcome to our family, We promise to remain authentic to the core.

What's in your core?

Your COREtec® floor
always fits your style &
stands up to real life,
it's engineered for simplicity.



Always fits your style

We have a passion for providing a wide selection of authentic natural looks, so you can express what makes you, you. Persistent in product innovation – including micro-beveled edges, enhanced painted bevels & Embossed in Register technology – we create the most appealing designs & textures available.



Stands up to real life

Our floors are 100% waterproof, kid proof & pet proof. Try them in your kitchen or bathroom: they won't warp or buckle, even if submerged in water.

Our 100% waterproof core, resilient vinyl and protective wear layer will keep your floor looking good for the life of your home. So naturally, all COREtec® floors come with a limited lifetime residential warranty.



Is engineered for simplicity

COREtec® is easy to install, to care for and to live with. Its secure angle tap system doesn't require any glue or nails and can be installed over existing floors without additional underlayment.

Forget about sanding, polishing, sealing or refinishing: our floors are maintenance-free.

There's a million reasons to choose COREtec®, but here's our top 6.

Our floors:

- ✓ Are extremely stable
- ✓ Reduce noise
- ✓ Are wear resistant
- ✓ Do not need to acclimate
- ✓ Are suitable for underfloor heating & cooling
- ✓ Install on any surface



Cork, the natural choice

All our floors have a unique attached cork underlayment. Why? It's warmer, quieter and easily installs over existing hard surfaces, perfectly concealing imperfections in subfloors. And: it's one of the most sustainable materials out there. Cork is harvested from the cork tree and can be re-harvested every decade without damaging the tree. A natural solution that brings only benefits to your home or business:



added sound insulation



a comfortable and warmer floor



a natural protection against mold & mildew



no need for separate underlayment



absorbs subfloor imperfections



SOUND CORE[®]

The original 100% waterproof floor, with extra noise reducing technology.

**0.55 mm
HIGH
PERFORMANCE
WEAR LAYERS**

IN STYLE
indistinguishable
from the real thing

COMFORT
warm & quiet
underfoot

ACOUSTIC
excellent
sound reduction

SUSTAINABLE
attached cork
underlayment

The **NATURALS**
BY CORETEC

**14
PATTERNS**
182 x 1220 mm

**8
AVAILABLE
IN HERRINGBONE**
110 x 660 mm

**8 mm
TOTAL
THICKNESS**



100% waterproof



Extremely stable



Pet proof



Reduces noise



Easy to install



Wear resistant



Installation on any surface



No acclimatisation necessary



Ideal for underfloor
heating & cooling



Electrostatic performance



From standard to herringbone: it's child's play!
Click, lock, enjoy.

COLORS IN
STANDARD PATTERN

TIMBER 50-LVPE-853	4 V-GROOVE	28
LEAF 50-LVPE-858	4 V-GROOVE	30
SWAMP 50-LVPE-859	4 V-GROOVE	32
HARVEST 50-LVP-801		34
SAND 50-LVP-802		36
GRAIN 50-LVP-803		38



COLORS IN 2 PATTERNS
STANDARD OR HERRINGBONE

ACORN 50-LVPE-854	4 V-GROOVE	4 V-GROOVE	50-LVPEH-854	12
HAZE 50-LVPE-855	4 V-GROOVE	4 V-GROOVE	50-LVPEH-855	14
BARK 50-LVPE-856	4 V-GROOVE	4 V-GROOVE	50-LVPEH-856	16
SPELT 50-LVPE-857	4 V-GROOVE	4 V-GROOVE	50-LVPEH-857	18
LUMBER 50-LVP-804		4 V-GROOVE	50-LVPEH-804	20
DESERT 50-LVP-805		4 V-GROOVE	50-LVPEH-805	22
FOREST 50-LVP-806		4 V-GROOVE	50-LVPEH-806	24
MEADOW 50-LVP-807		4 V-GROOVE	50-LVPEH-807	26



ALSO AVAILABLE IN **HERRINGBONE**

4 V-GROOVE



50-LVPEH-854



50-LVPE-854

4 V-GROOVE

ACORN

Standard: 50-LVPE-854
Herringbone: 50-LVPEH-854



HAZE

Standard: 50-LVPE-855
Herringbone: 50-LVPEH-855



4 V-GROOVE

50-LVPE-855

ALSO AVAILABLE IN HERRINGBONE

4 V-GROOVE



50-LVPEH-855

The NATURALS
COLLECTION

ALSO AVAILABLE IN **HERRINGBONE**

4 **V-GROOVE**



50-LVPEH-856



50-LVPE-856

4 **V-GROOVE**

Standard: 50-LVPE-856
Herringbone: 50-LVPEH-856

BARK



The **NATURALS** COLLECTION

SPELT

Standard: 50-LVPE-857
Herringbone: 50-LVPEH-857



4 V-GROOVE

50-LVPE-857

ALSO AVAILABLE IN HERRINGBONE

4 V-GROOVE



50-LVPEH-857

The NATURALS
COLLECTION

ALSO AVAILABLE IN HERRINGBONE

4 V-GROOVE



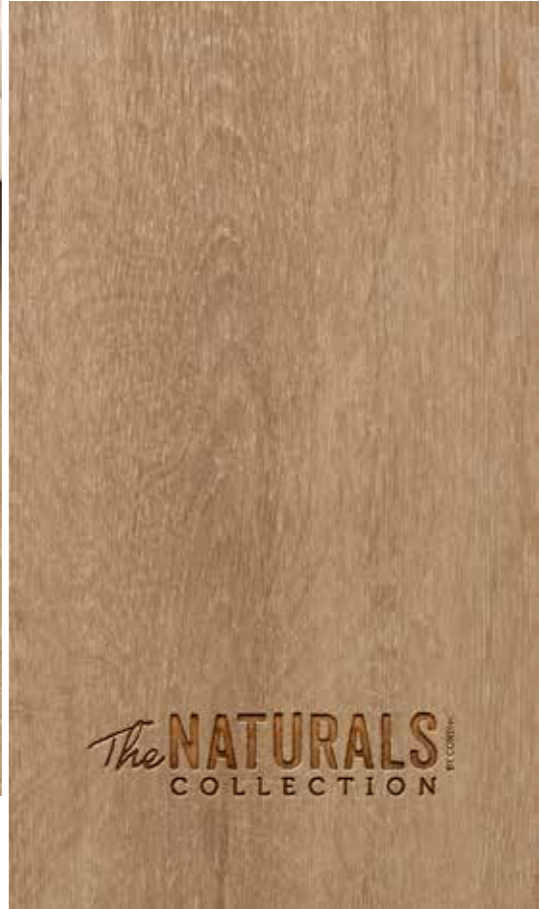
50-LVPEH-804



50-LVP-804

LUMBER

Standard: 50-LVP-804
Herringbone: 50-LVPEH-804



The **NATURALS** COLLECTION

DESERT

Standard: 50-LVP-805
Herringbone: 50-LVPEH-805



ALSO AVAILABLE IN HERRINGBONE

4 V-GROOVE



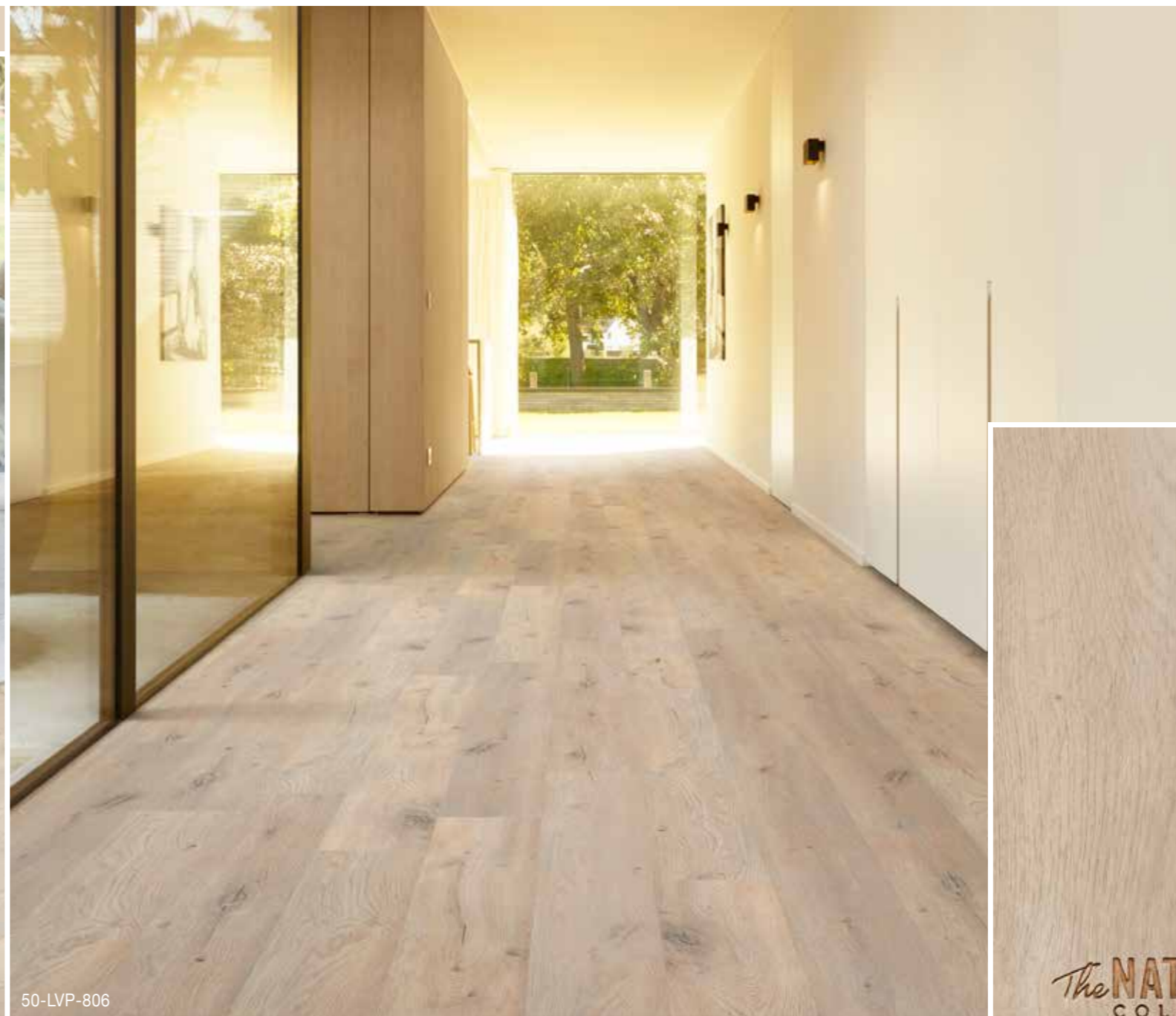
The **NATURALS** COLLECTION
by CORELITE

ALSO AVAILABLE IN **HERRINGBONE**

4 V-GROOVE



50-LVPEH-806



50-LVP-806

FOREST

Standard: 50-LVP-806
Herringbone: 50-LVPEH-806



The **NATURALS**
COLLECTION

MEADOW

Standard: 50-LVP-807
Herringbone: 50-LVPEH-807



ALSO AVAILABLE IN HERRINGBONE

4 V-GROOVE





50-LVPE-853

4 V-GROOVE

TIMBER

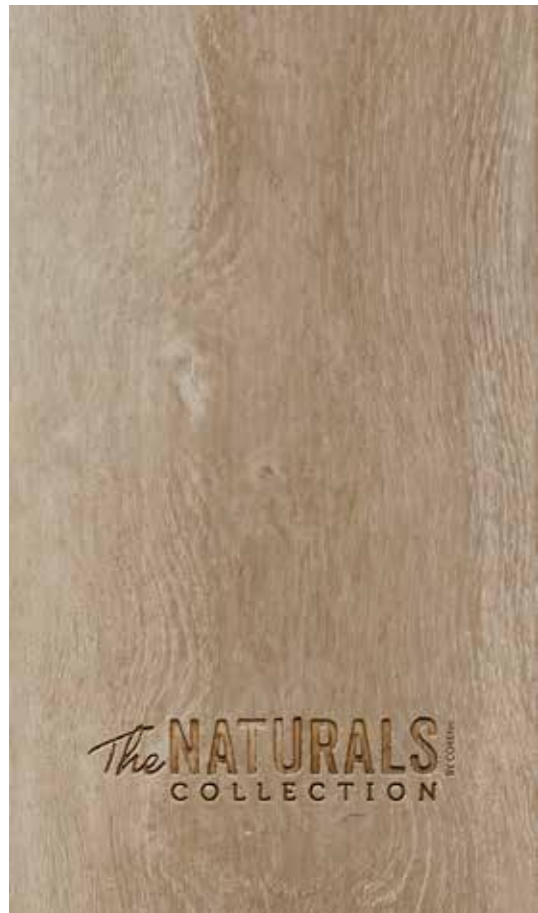
50-LVPE-853



The **NATURALS** COLLECTION
IN COREtec

LEAF

50-LVPE-858



4 V-GROOVE

50-LVPE-858



50-LVPE-859

4 V-GROOVE

50-LVPE-859

SWAMP



The **NATURALS** COLLECTION
BY COREL

HARVEST

50-LVP-801



50-LVP-801

The **NATURALS** COLLECTION



50-LVP-802

50-LVP-802

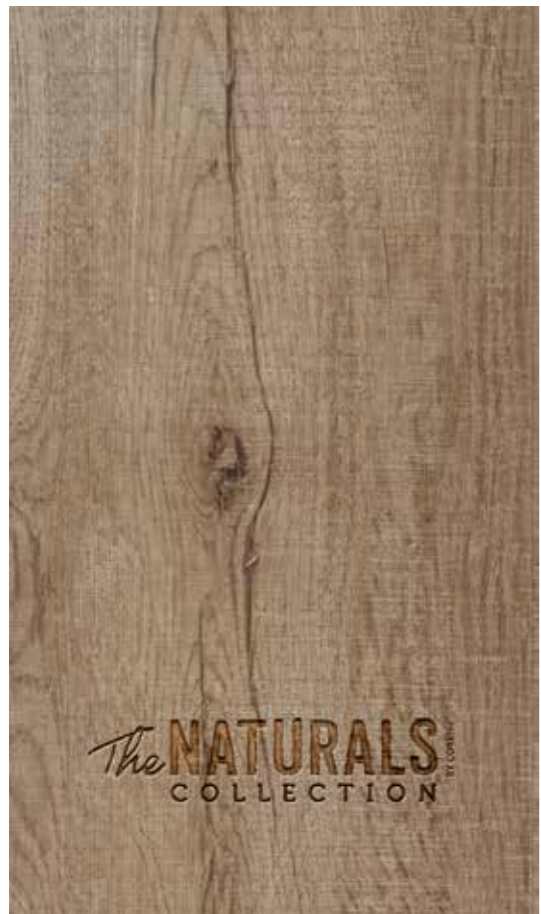
SAND



The **NATURALS** COLLECTION
BY COREtec

GRAIN

50-LVP-803

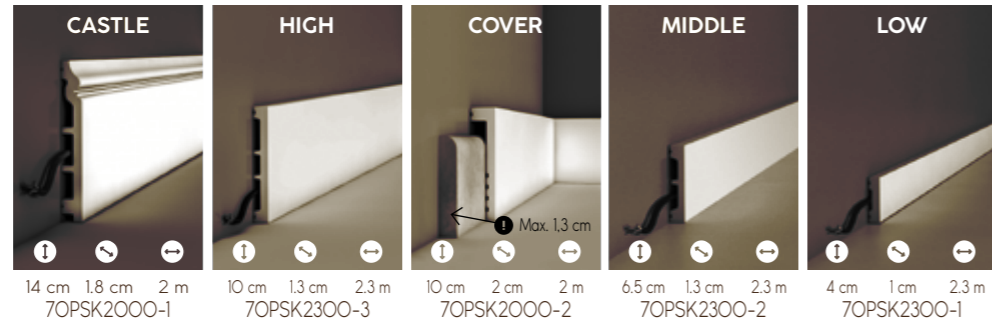


50-LVP-803

ACCESSORIES

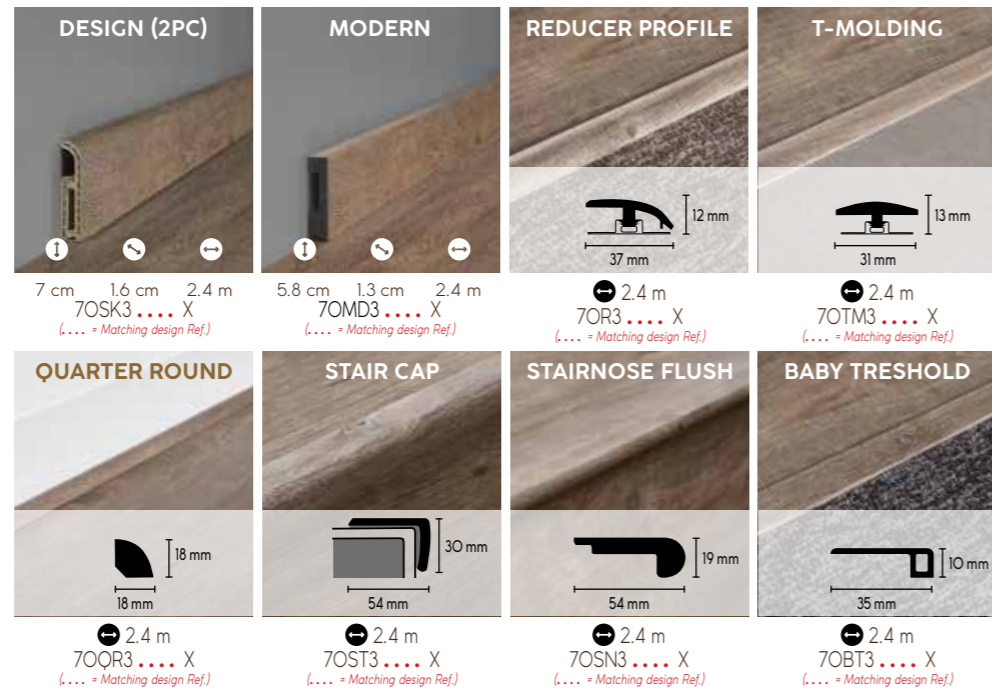
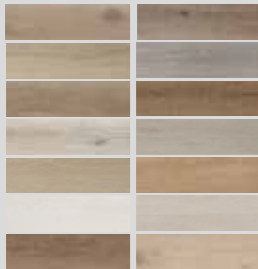
Paintable skirtings

Our paintable skirtings are 100% waterproof & shock resistant.



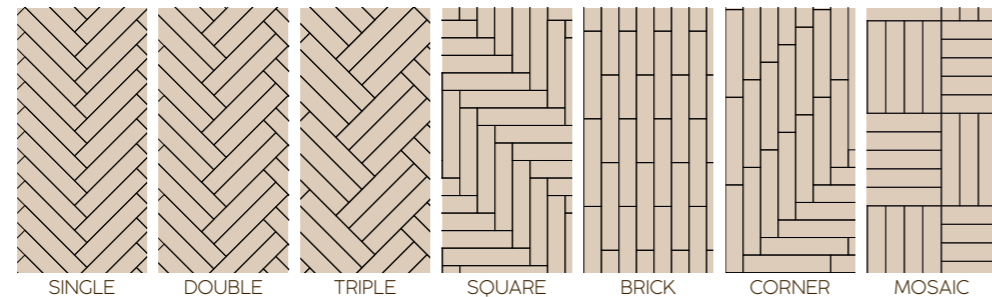
Matching design accessories

Our design accessories match the design of your floor & are also 100% waterproof & shock resistant.



Herringbone variations

Mix & match your own style...

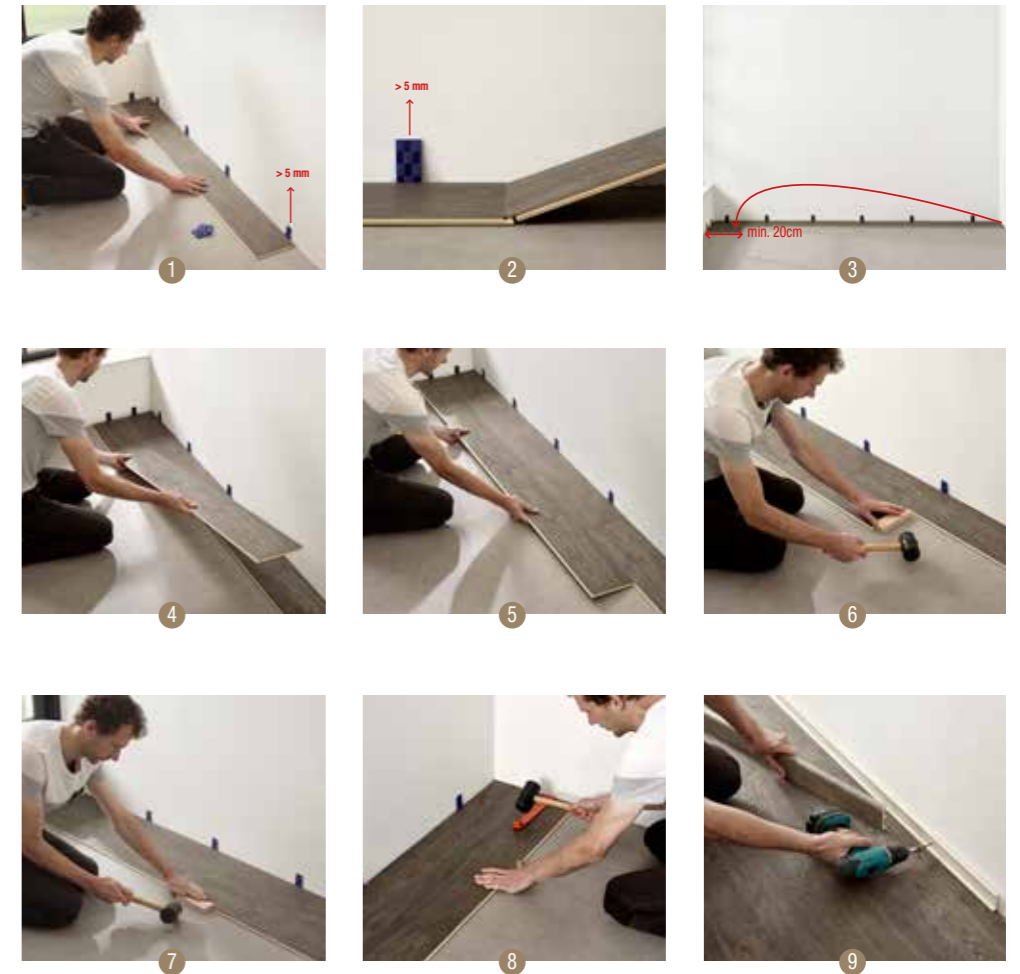


INSTALLATION

Easy to install

COREtec® floors have the easiest install in the market.

Follow the steps or watch our installation video on our website. Surf to www.coretecfloors.com



MAINTENANCE

The COREtec® Clean, quick & green kit:

- Daily cleaner
- Deep cleaner
- Stain remover



TECHNICAL SPECIFICATIONS



8.00 mm
(EN ISO 24346)



0.55 mm
(EN ISO 24340)



STANDARD
182 x 1220 mm
HERRINGBONE
110 x 660 mm



STANDARD
12 pcs
2.66 m²
22.04 kg
HERRINGBONE
32 pcs
2,32 m²
20 kg

Level of Use

Classe d'uso
Clasificación de uso
Classe de utilização
23 / 33 / 41 (EN ISO 10874)

Geometrical characteristics

Fantasia geometriche
Características geométricas
Características geométricas

Conform (ISO 24337)

Wear resistance

Resistenza all'usura
Resistencia al desgaste
Resistência ao desgaste
Pass 4000 cycles (EN 13329 Annex E)

Castor chair resistance

Resistenza alle sedie con ruote
Resistencia a sillas con ruedas
Resistência a cadeira de rodas
Pass 25000 cycles (EN 425)

Effect of furniture leg

Effeto furniture leg
Efecto de la pata de un mueble
Efeito da perna do móvel
No visible changes (EN 16581)

Residual indentation

Indentazione residua certificata
Huella residual
Recuo Residual
 ≤ 0.15 mm (EN ISO 24343-1)

Resistance to staining

Resistenza alle macchie
Resistencia al manchado
Resistência a manchas
5 (No visible changes) (EN 438-2)

Locking strength

Chiusura perfetta con sistema a click
Resistencia a la tracción
Força de encaixe
LS ≥ 2.0 / SS ≥ 3.5 (EN 24334)

Dimensional stability

Stabilità dimensionale
Estabilidad dimensional
Estabilidade dimensional
Pass $\leq 0.25\%$ (EN ISO 23999)

Colour fastness to light

Resistenza alla luce
Solidez del color a luz artificial
Resistência da cor à luz
> grade 6 (ISO 105-B02)

Impact Sound Reduction

Isolamento acustico
Aislamiento acústico
Isolamento acústico
 $\Delta L_w = 20$ dB (ISO 10140-3 / EN 717-2)

$\Delta L_{LIN} = 10$ dB (ISO 10140-3 / EN 717-2)

Formaldehyde emission class

Classe Formaldeide
Emisión formaldehído
Classificação formaldeído
E1 (EN 717-1)

Fire classification

Classe di resistenza al fuoco
Resistencia al fuego
Classificação de Fogo
Bfl - S1 (EN 13501)

Slip resistance

Coefficiente dinamico di attrito
Coeficiente de fricción
Coeficiente de atrito
DS - R10 (EN 13893 / DIN 51130)

Underfloor heating

Riscaldamento a pavimento
Calefacción por suelo radiante
Aquecimento por piso radiante
Conform

Electrostatic performance

Performance elettrostatica
Rendimiento antiestático
Acumulação de cargas eletrostáticas
 ≤ 2 kV (EN 1815)

Thermal resistance

Resistenza al calore
Aislamiento térmico
Isolamento térmico
 0.066 m²-K/W



LIFETIME
WARRANTY
RESIDENTIAL



10 YEAR
WARRANTY
COMMERCIAL



US PATENT
APPROVED
156.233



GREEN-CODE
ECI PLUS
emissionschim



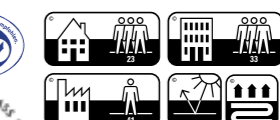
EN 14041
CE
DOP-ELV
USFLOORS Int flc
Textelstraat 20
8790 WAREGEM
Belgium
resilient floor covering



GREENGUARD
PRODUCT CERTIFIED FOR
LOW CHEMICAL EMISSIONS
UL.COM/CGG
UL 2818
GOLD



AgBB
EMISION CLASS FOR
M1



SOUND
core
BY COREtec



PHthalate FREE
LEAD FREE
Pb

Warranty (Years) The warranty covers manufacturing defects and premature wear in the event of normal use.
Garantía (años) La garantía cubre los defectos de fabricación y el desgaste prematuro en caso de uso normal.
Garanzia (anni) La garanzia copre i difetti di produzione e usura prematura in caso di corretto e normale utilizzo.
Garantia (Anos) A garantia cobre defeitos industriais e uso prematuro usado normal.

COREtec[®]
FLOORS

Souverainestraat 27 - 9770 Kruisem (Belgium)
info@usfloors.be · www.coretecfloors.com

USFLOORS A PROUD DIVISION OF **Shaw** INDUSTRIES